

## Predictive Models for Coastal Hazards

JC Dietrich<sup>1</sup>,  
R Cyriac<sup>1</sup>, A Thomas<sup>1</sup>, A Gharagozlou<sup>1</sup>, N Tull<sup>1</sup>,  
BO Blanton<sup>2</sup>, JG Fleming<sup>3</sup>, RA Luettich<sup>4</sup>, MF Overton<sup>1</sup>

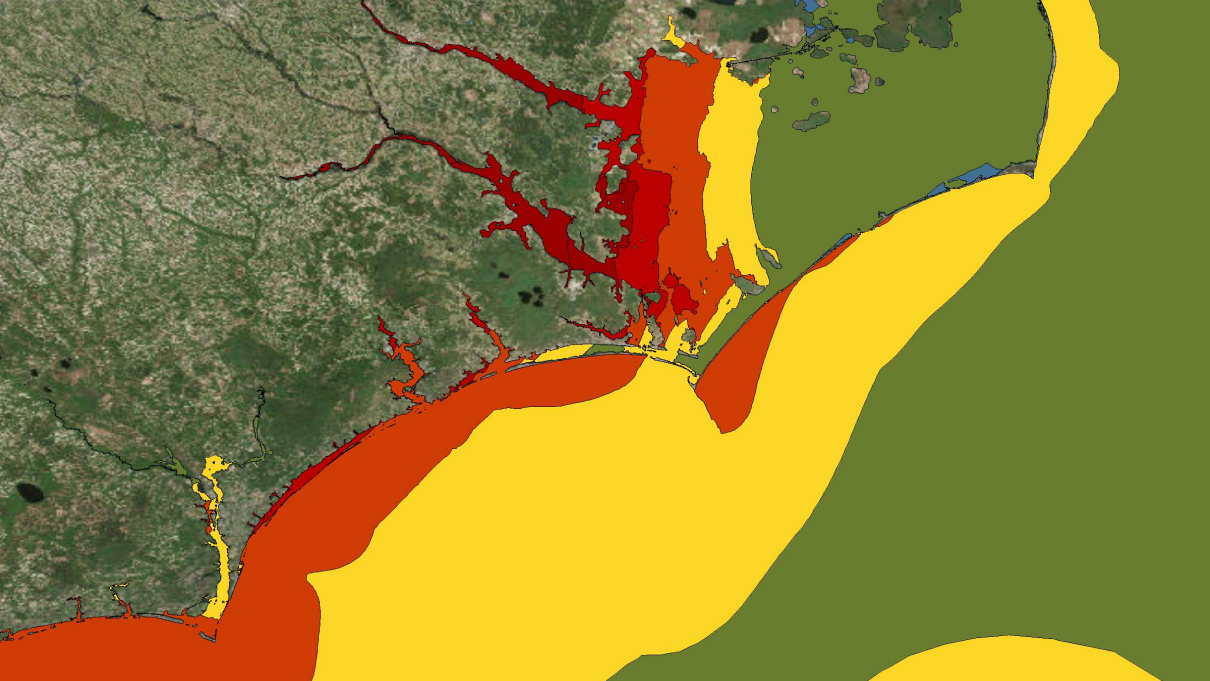
<sup>1</sup>Dep't of Civil, Construction, and Environmental Engineering, NC State Univ

<sup>2</sup>Renaissance Computing Institute   <sup>3</sup>Seahorse Coastal Consulting

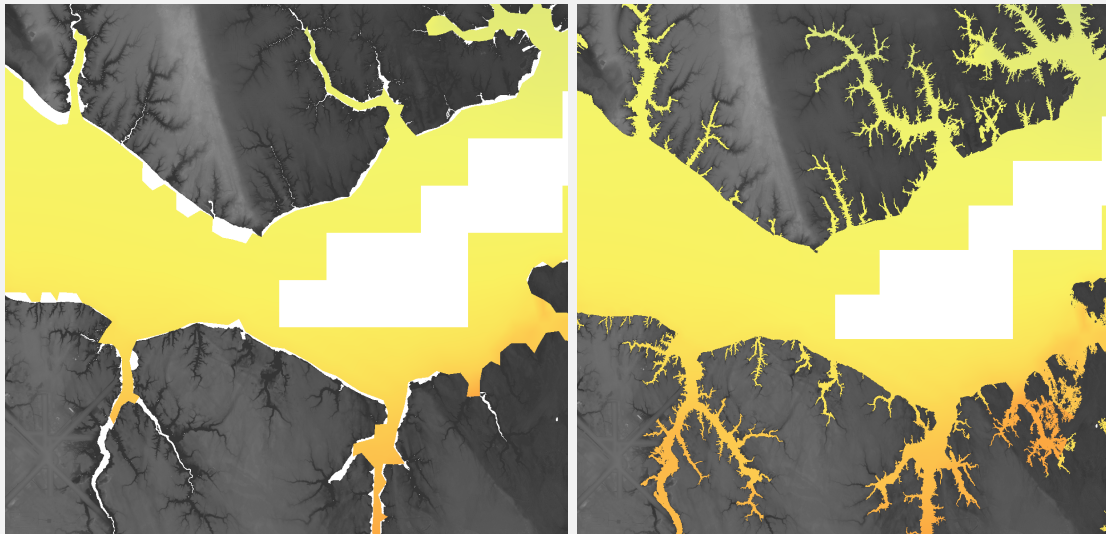
<sup>4</sup>Institute for Marine Sciences, Univ Chapel Hill

NC Sea Grant Site Review  
Raleigh NC, 2–4 October 2018



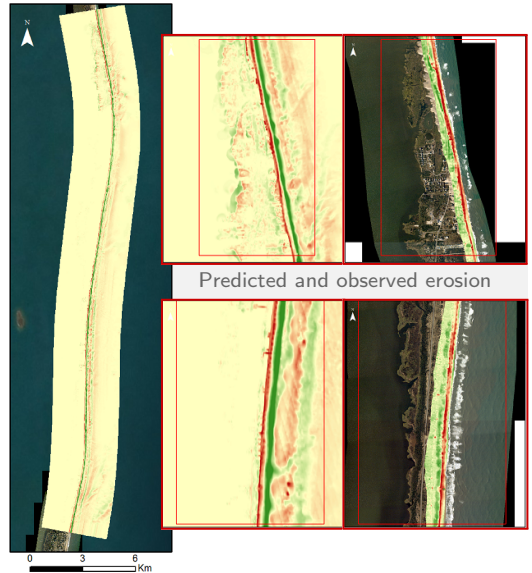
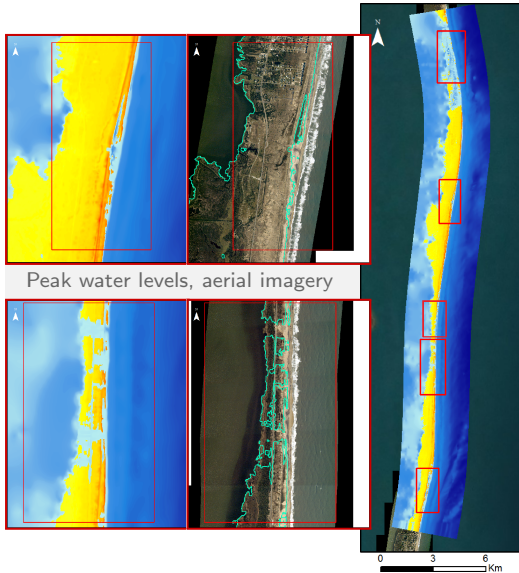


## Project #1: Strengthening the Hurricane Wave and Surge Forecast Guidance ....



Storm surge predictions for Matthew (2016) for lower Neuse River (a) before and (b) after enhancing resolution.

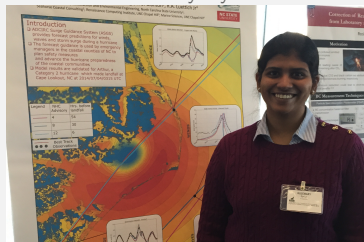
## Project #2: Interactions between Waves, Flooding, and Beach Morphology ....





# Science Communication Opportunities for Graduate Students

Rosemary Cyriac



## 3 Posts, *Coastwatch Currents*:

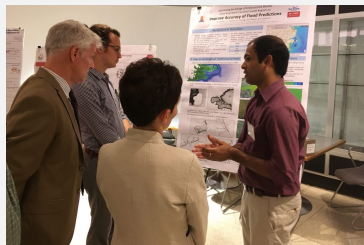
- Cyriac, 14 May 2018
- Tull, 8 Aug 2017
- Cyriac, 29 Oct 2014

## 7 Conference Presentations:

- ADCIRC Users Meeting
- ASBPA National Conference
- Young Coastal Scientists and Engineers Conference

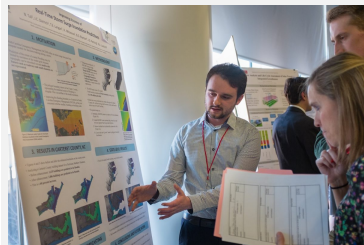
## 6 Poster Presentations:

- AGU Ocean Sciences Meeting
- ASBPA National Conference
- ECU Hurricane Conference
- NC Coastal Conference



Ajimon Thomas

Alireza Gharagozlou



Nelson Tull